

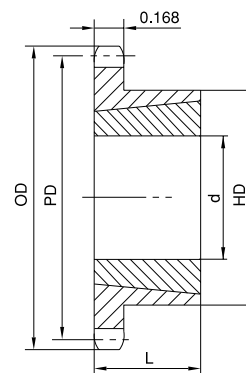
TAPER-BUSHED SPROCKETS

No. 35

3/8" Pitch

Single Taper-Bushed

No. of Teeth	Type	Part No.	Bushing	OD	PD	Max. Bore d	HD	L	App. Wt. (Lbs.)	
									Sprocket	Bushing
18	B	H35BTB18	1008	2.352	2.159	1	1-7/8*	7/8	0.4	0.3
19	B	H35BTB19	1008	2.472	2.278	1	1-13/16	7/8	0.5	0.3
20	B	H35BTB20	1008	2.593	2.397	1	1-15/16	7/8	0.6	0.3
21	B	H35BTB21	1008	2.713	2.516	1	2-1/16	7/8	0.7	0.3
22	B	H35BTB22	1210	2.883	2.635	1-1/4	2-3/8*	1	0.8	0.6
23	B	H35BTB23	1210	2.954	2.754	1-1/4	2-7/16	1	0.9	0.6
24	B	H35BTB24	1210	3.074	2.873	1-1/4	2-7/16	1	0.9	0.6
25	B	H35BTB25	1210	3.194	2.992	1-1/4	2-7/16	1	1.2	0.6
26	B	H35BTB26	1610	3.314	3.111	1-5/8	2-7/8*	1	1.1	0.9
28	B	H35BTB28	1610	3.553	3.349	1-5/8	2-7/8	1	1.2	0.9
30	B	H35BTB30	1610	3.793	3.588	1-5/8	3-1/8	1	1.2	0.9
32	B	H35BTB32	1610	4.032	3.826	1-5/8	3-1/4	1	1.3	0.9
35	B	H35BTB35	1610	4.392	4.183	1-5/8	3-1/4	1	1.4	0.9
36	B	H35BTB36	1610	4.511	4.303	1-5/8	3-1/4	1	1.4	0.9
40	B	H35BTB40	1610	4.990	4.786	1-5/8	3-1/4	1	1.9	0.9
42	B	H35BTB42	1610	5.229	5.018	1-5/8	3-1/4	1	2.0	0.9
45	B	H35BTB45	1610	5.588	5.376	1-5/8	3-1/4	1	2.1	0.9
48	B	H35BTB48	1610	5.946	5.734	1-5/8	3-1/4	1	2.3	0.9
54	B	H35BTB54	1610	6.663	6.449	1-5/8	3-1/4	1	2.6	0.9
60	B	H35BTB60	1610	7.380	7.165	1-5/8	3-1/4	1	3.0	0.9
70	B	H35BTB70	1610	8.575	8.358	1-5/8	3-1/4	1	3.7	0.9
72	B	H35BTB72	1610	8.814	8.597	1-5/8	3-1/4	1	3.9	0.9
80	B	H35BTB80	1610	9.770	9.552	1-5/8	3-1/4	1	4.5	0.9
84	B	H35BTB84	1610	10.247	10.029	1-5/8	3-1/4	1	4.9	0.9
96	B	H35BTB96	1610	11.680	11.461	1-5/8	3-1/4	1	6.0	0.9
112	B	H35BTB112	1610	13.590	13.371	1-5/8	3-1/4	1	7.8	0.9



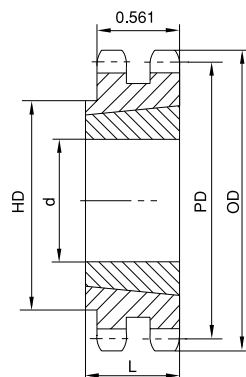
Type B

H - Denotes hardened teeth.

*Hub has recessed groove allowing for chain clearance.

Double Taper-Bushed

No. of Teeth	Type	Part No.	Bushing	OD	PD	Max. Bore d	HD	L	App. Wt. (Lbs.)	
									Sprocket	Bushing
19	B ₁	HD35BTB19	1008	2.472	2.278	1	1-53/64	7/8	0.6	0.3
20	B ₁	HD35BTB20	1008	2.593	2.397	1	1-15/16	7/8	0.8	0.3
21	B ₁	HD35BTB21	1008	2.713	2.516	1	2-1/16	7/8	1.4	0.3
22	B ₁	HD35BTB22	1008	2.833	2.635	1	2-3/16	7/8	1.7	0.3
24	B ₁	HD35BTB24	1210	3.074	2.873	1-1/4	2-7/16	1	1.8	0.6
26	B ₁	HD35BTB26	1210	3.314	3.111	1-1/4	2-5/8	1	2.0	0.6
30	B ₁	HD35BTB30	1610	3.793	3.588	1-5/8	3-1/8	1	1.8	0.9
32	B ₁	HD35BTB32	1610	4.032	3.826	1-5/8	3-1/4	1	2.0	0.9
35	B ₁	HD35BTB35	1610	4.392	4.183	1-5/8	3-1/4	1	2.3	0.9
40	B ₁	HD35BTB40	1610	4.990	4.780	1-5/8	3-1/4	1	2.9	0.9
45	B ₁	HD35BTB45	1610	5.588	5.376	1-5/8	3-1/4	1	3.2	0.9
48	B ₁	HD35BTB48	1610	5.946	5.734	1-5/8	3-5/8	1	3.5	0.9
54	B ₁	HD35BTB54	1610	6.663	6.449	1-5/8	3-5/8	1	3.9	0.9
60	B ₁	HD35BTB60	1610	7.380	7.165	1-5/8	3-5/8	1	4.9	0.9
70	B ₁	HD35BTB70	1610	8.575	8.358	1-5/8	3-5/8	1	6.3	0.9
80	B ₁	HD35BTB80	1610	9.770	9.552	1-5/8	3-5/8	1	7.9	0.9
96	B ₁	HD35BTB96	1610	11.680	11.461	1-5/8	3-5/8	1	9.9	0.9
112	B ₁	HD35BTB112	1610	13.590	13.371	1-5/8	3-5/8	1	10.9	0.9



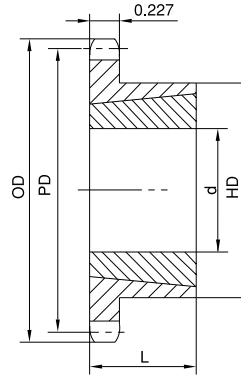
Type B₁

H - Denotes hardened teeth.

No. 41

TAPER-BUSHED SPROCKETS

1/2 " Pitch



Type B

Single Taper-Bushed

No. of Teeth	Part No.	Bushing	OD	PD	Max. Bore d	HD	L	App. Wt. (Lbs.)	
								Sprocket	Bushing
14	H41BTB14	1008	2.490	2.249	1	1-7/8*	7/8	0.4	0.3
15	H41BTB15	1008	2.650	2.405	1	1-7/8	7/8	0.5	0.3
16	H41BTB16	1008	2.810	2.503	1	2	7/8	0.6	0.3
17	H41BTB17	1210	2.980	2.721	1-1/4	2-3/8*	1	0.7	0.6
18	H41BTB18	1210	3.140	2.879	1-1/4	2-3/8	1	0.9	0.6
19	H41BTB19	1210	3.300	3.038	1-1/4	2-1/2	1	1.1	0.6
20	H41BTB20	1610	3.460	3.196	1-5/8	2-7/8*	1	1.1	0.9
21	H41BTB21	1610	3.620	3.355	1-5/8	3*	1	1.2	0.9
22	H41BTB22	1610	3.780	3.573	1-5/8	3	1	1.3	0.9
23	H41BTB23	1610	3.940	3.672	1-5/8	3	1	1.4	0.9
24	H41BTB24	1610	4.100	3.831	1-5/8	3-1/4	1	1.4	0.9
25	H41BTB25	1610	4.260	3.989	1-5/8	3-1/4	1	1.5	0.9
26	H41BTB26	1610	4.420	4.148	1-5/8	3-1/4	1	1.5	0.9
28	H41BTB28	1610	4.740	4.466	1-5/8	3-1/4	1	1.7	0.9
30	H41BTB30	1610	5.060	4.783	1-5/8	3-1/4	1	1.8	0.9
32	H41BTB32	1610	5.380	5.101	1-5/8	3-1/4	1	1.9	0.9
35	H41BTB35	1610	5.860	5.578	1-5/8	3-1/4	1	2.3	0.9
36	H41BTB36	1610	6.020	5.737	1-5/8	3-1/4	1	2.4	0.9
40	H41BTB40	1610	6.650	6.373	1-5/8	3-1/4	1	2.7	0.9
45	H41BTB45	1610	7.450	7.168	1-5/8	3-1/4	1	3.5	0.9
48	H41BTB48	1610	7.930	7.645	1-5/8	3-1/4	1	4.1	0.9
54	H41BTB54	1610	8.890	8.599	1-5/8	3-1/4	1	4.9	0.9
60	H41BTB60	1610	9.840	9.554	1-5/8	3-1/4	1	5.7	0.9
70	H41BTB70	1610	11.430	11.145	1-5/8	3-1/4	1	7.4	0.9
72	H41BTB72	1610	11.750	11.463	1-5/8	3-1/4	1	8.2	0.9
80	H41BTB80	1610	13.030	12.736	1-5/8	3-1/4	1	9.6	0.9
96	H41BTB96	1610	15.570	15.281	1-5/8	3-1/4	1	13.1	0.9

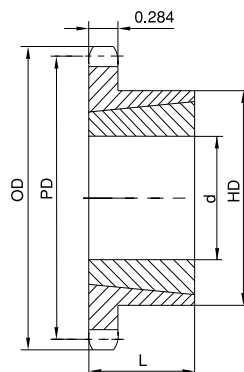
H - Denotes hardened teeth.

*Hub has recessed groove allowing for chain clearance.

TAPER-BUSHED SPROCKETS

No. 40

1/2 " Pitch



Type B

Single Taper-Bushed

No. of Teeth	Part No.	Bushing	OD	PD	Max. Bore d	HD	L	App. Wt. (Lbs.)	
								Sprocket	Bushing
14	H40BTB14	1008	2.491	2.247	1	1-13/16*	7/8	0.3	0.3
15	H40BTB15	1008	2.652	2.405	1	1-13/16	7/8	0.4	0.3
16	H40BTB16	1008	2.814	2.563	1	1-15/16	7/8	0.5	0.3
17	H40BTB17	1210	2.975	2.721	1-1/4	2-3/8*	1	0.5	0.6
18	H40BTB18	1210	3.135	2.879	1-1/4	2-15/32*	1	0.6	0.6
19	H40BTB19	1210	3.296	3.038	1-1/4	2-15/32	1	0.7	0.6
20	H40BTB20	1610	3.457	3.196	1-5/8	2-25/32*	1	0.7	0.9
21	H40BTB21	1610	3.617	3.355	1-5/8	2-25/32	1	0.8	0.9
22	H40BTB22	1610	3.778	3.513	1-5/8	2-25/32	1	0.9	0.9
23	H40BTB23	1610	3.938	3.672	1-5/8	3	1	1.0	0.9
24	H40BTB24	1610	4.098	3.831	1-5/8	3-1/4	1	1.4	0.9
25	H40BTB25	1610	4.258	3.989	1-5/8	3-1/4	1	1.5	0.9
26	H40BTB26	1610	4.418	4.148	1-5/8	3-1/4	1	1.7	0.9
28	H40BTB28	1610	4.738	4.466	1-5/8	3	1	1.8	0.9
30	H40BTB30	1610	5.057	4.783	1-5/8	3	1	1.9	0.9
32	H40BTB32	1610	5.377	5.101	1-5/8	3	1	1.9	0.9
35	H40BTB35	1610	5.855	5.578	1-5/8	3	1	2.3	0.9
36	H40BTB36	1610	6.015	5.737	1-5/8	3	1	2.4	0.9
40	H40BTB40	1610	6.653	6.373	1-5/8	3	1	2.8	0.9
42	H40BTB42	1610	6.972	6.691	1-5/8	3	1	2.9	0.9
45	H40BTB45	1610	7.451	7.168	1-5/8	3	1	3.5	0.9
48	H40BTB48	1610	7.928	7.645	1-5/8	3	1	4.0	0.9
54	H40BTB54	1610	8.885	8.599	1-5/8	3	1	4.9	0.9
60	H40BTB60	1610	9.841	9.554	1-5/8	3	1	6.0	0.9
70	H40BTB70	2012	11.434	11.145	2	3-9/16	1-1/4	8.2	1.7
72	H40BTB72	2012	11.752	11.463	2	3-9/16	1-1/4	9.0	1.7
80	H40BTB80	2012	13.026	12.736	2	3-9/16	1-1/4	10.8	1.7
84	H40BTB84	2012	13.663	13.372	2	3-9/16	1-1/4	11.3	1.7
96	H40BTB96	2012	15.573	15.282	2	3-9/16	1-1/4	14.6	1.7
112	H40BTB112	2517	18.122	17.828	2-1/2	4-1/4	1-3/4	20.5	1.7

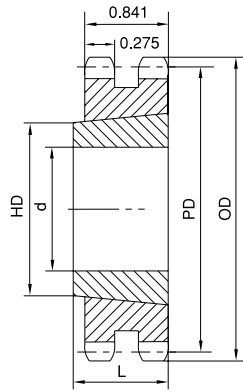
H - Denotes hardened teeth.

*Hub has recessed groove allowing for chain clearance.

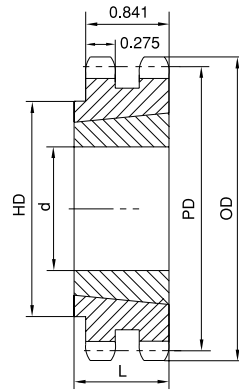
No. 40

TAPER-BUSHED SPROCKETS

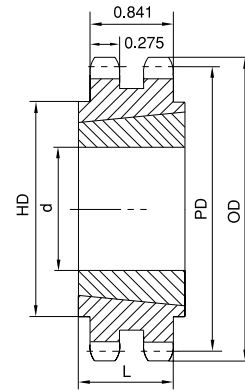
1/2 " Pitch



Type A



Type B



Type C

Double Taper-Bushed

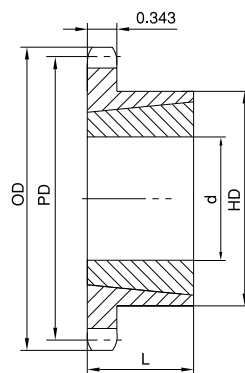
No. of Teeth	Part No.	Type	Bushing	OD	PD	Max. Bore d	HD	L	App. Wt. (Lbs.)	
									Sprocket	Bushing
15	HD40ATB15	A	1008	2.652	2.405	1	1-17/64	7/8	0.5	0.3
16	HD40ATB16	A	1008	2.814	2.563	1	1-17/64	7/8	0.6	0.3
17	HD40ATB17	A	1008	2.975	2.721	1	1-17/64	7/8	0.7	0.3
18	HD40BTB18	B	1210	3.135	2.879	1-1/4	2-5/16	1	0.7	0.6
19	HD40BTB19	B	1210	3.296	3.038	1-1/4	2-1/2	1	0.9	0.6
20	HD40BTB20	B	1610	3.457	3.196	1-5/8	2-5/8	1	0.9	0.9
21	HD40BTB21	B	1610	3.617	3.355	1-5/8	2-3/4	1	1.0	0.9
23	HD40BTB23	B	1610	3.938	3.672	1-5/8	3	1	1.3	0.9
25	HD40BTB25	B	2012	4.258	3.989	2	3-13/32	1-1/4	1.6	1.7
30	HD40BTB30	B	2012	5.057	4.783	2	4-15/64	1-1/4	3.4	1.7
36	HD40BTB36	B	2012	6.015	5.737	2	5-5/32	1-1/4	5.9	1.7
42	HD40CTB42	C	2517	6.972	6.691	2-1/2	4-1/4	1-3/4	7.0	3.5
48	HD40CTB48	C	2517	7.928	7.645	2-1/2	4-1/4	1-3/4	9.6	3.5
52	HD40CTB52	C	2517	8.566	8.281	2-1/2	4-1/4	1-3/4	11.4	3.5
60	HD40CTB60	C	2517	9.841	9.554	2-1/2	4-1/4	1-3/4	15.4	3.5
68	HD40CTB68	C	2517	11.115	10.826	2-1/2	4-1/4	1-3/4	20.5	3.5
76	HD40CTB76	C	2517	12.389	12.099	2-1/2	4-1/4	1-3/4	25.7	3.5
84	HD40CTB84	C	2517	13.663	13.372	2-1/2	4-1/4	1-3/4	31.6	3.5
95	HD40CTB95	C	2517	15.414	15.122	2-1/2	4-1/4	1-3/4	34.1	3.5
102	HD40CTB102	C	2517	16.529	16.236	2-1/2	4-1/4	1-3/4	36.8	3.5

H - Denotes hardened teeth.

TAPER-BUSHED SPROCKETS

No. 50

5/8 " Pitch



Type B

Single Taper-Bushed

No. of Teeth	Part No.	Bushing	OD	PD	Max. Bore d	HD	L	App. Wt. (Lbs.)	
								Sprocket	Bushing
12	H50TB12	1008	2.708	2.415	1	1-15/16*	7/8	0.5	0.3
13	H50TB13	1008	2.911	2.612	1	1-13/16	7/8	0.5	0.3
14	H50TB14	1008	3.113	2.809	1	1-15/16	7/8	0.6	0.3
15	H50TB15	1210	3.315	3.006	1-1/4	2-15/32*	1	0.7	0.6
16	H50TB16	1610	3.517	3.204	1-5/8	2-25/32*	1	0.7	0.9
17	H50TB17	1610	3.719	3.401	1-5/8	2-25/32*	1	0.8	0.9
18	H50TB18	1610	3.920	3.599	1-5/8	2-25/32	1	0.9	0.9
19	H50TB19	1610	4.120	3.797	1-5/8	3	1	1.3	0.9
20	H50TB20	1610	4.321	3.995	1-5/8	3-1/4	1	1.6	0.9
21	H50TB21	1610	4.522	4.193	1-5/8	3	1	1.5	0.9
22	H50TB22	1610	4.722	4.392	1-5/8	3	1	1.6	0.9
23	H50TB23	2012	4.922	4.590	2	3-9/16	1-1/4	2.0	1.7
24	H50TB24	2012	5.122	4.788	2	3-9/16	1-1/4	2.2	1.7
25	H50TB25	2012	5.322	4.987	2	3-9/16	1-1/4	2.4	1.7
26	H50TB26	2012	5.522	5.185	2	3-9/16	1-1/4	2.5	1.7
27	H50TB27	2012	5.723	5.384	2	3-9/16	1-1/4	2.6	1.7
28	H50TB28	2012	5.922	5.582	2	3-9/16	1-1/4	2.8	1.7
30	H50TB30	2012	6.321	5.979	2	3-9/16	1-1/4	3.2	1.7
32	H50TB32	2012	6.721	6.376	2	3-9/16	1-1/4	3.6	1.7
35	H50TB35	2012	7.319	6.972	2	3-9/16	1-1/4	4.2	1.7
36	H50TB36	2012	7.519	7.171	2	3-9/16	1-1/4	4.3	1.7
40	H50TB40	2012	8.316	7.966	2	3-9/16	1-1/4	5.2	1.7
42	H50TB42	2012	8.715	8.363	2	3-9/16	1-1/4	5.9	1.7
45	H50TB45	2012	9.313	8.960	2	3-9/16	1-1/4	6.5	1.7
48	H50TB48	2012	9.911	9.556	2	3-9/16	1-1/4	7.3	1.7
54	H50TB54	2012	11.106	10.749	2	3-9/16	1-1/4	9.0	1.7
60	H50TB60	2012	12.301	11.942	2	3-9/16	1-1/4	10.8	1.7
70	H50TB70	2517	14.292	13.931	2-1/2	4-1/4	1-3/4	14.0	3.5
72	H50TB72	2517	14.690	14.329	2-1/2	4-1/4	1-3/4	15.5	3.5
80	H50TB80	2517	16.282	15.920	2-1/2	4-1/4	1-3/4	19.5	3.5
84	H50TB84	2517	17.079	16.715	2-1/2	4-1/4	1-3/4	22.5	3.5
96	H50TB96	2517	19.466	19.102	2-1/2	4-1/4	1-3/4	29.0	3.5
112	H50TB112	2517	22.651	22.285	2-1/2	4-1/4	1-3/4	38.7	3.5

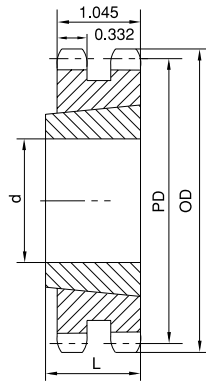
H - Denotes hardened teeth.

*Hub has recessed groove allowing for chain clearance.

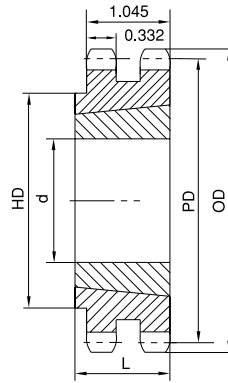
No. 50

TAPER-BUSHED SPROCKETS

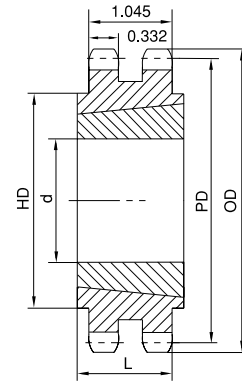
5/8 " Pitch



Type A



Type B



Type C

Double Taper-Bushed

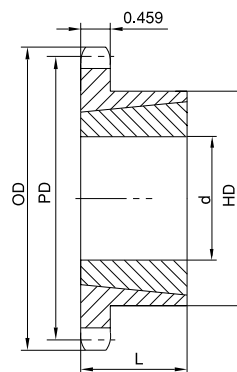
No. of Teeth	Type	Part No.	Bushing	OD	PD	Max. Bore d	HD	L	App. Wt. (Lbs.)	
									Sprocket	Bushing
14	A	HD50ATB14	1008	3.113	2.809	1		7/8	0.8	0.3
15	A	HD50ATB15	1210	3.315	3.006	1-1/4		1	0.9	0.6
16	A	HD50ATB16	1210	3.517	3.204	1-1/4		1	1.1	0.6
17	A	HD50ATB17	1610	3.719	3.410	1-5/8		1	1.1	0.6
18	A	HD50ATB18	1610	3.920	3.599	1-5/8		1	1.3	0.9
19	A	HD50ATB19	1610	4.120	3.797	1-5/8		1	1.6	0.9
20	B	HD50BTB20	2012	4.321	3.995	2	3-1/4	1-1/4	1.5	1.7
21	B	HD50BTB21	2012	4.522	4.193	2	3-1/2	1-1/4	1.9	1.7
25	B	HD50BTB25	2012	5.322	4.987	2	4-9/32	1-1/4	3.8	1.7
30	B	HD50BTB30	2517	6.321	5.979	2-1/2	5-9/32	1-3/4	7.5	3.5
36	C	HD50CTB36	2517	7.519	7.171	2-1/2	4-1/4	1-3/4	9.4	3.5
42	C	HD50CTB42	2517	8.715	8.363	2-1/2	4-1/4	1-3/4	13.4	3.5
48	C	HD50CTB48	2517	9.911	9.556	2-1/2	4-1/4	1-3/4	18.6	3.5
52	C	HD50CTB52	2517	10.707	10.351	2-1/2	4-3/8	1-3/4	22.2	3.5
60	C	HD50CTB60	2517	12.301	11.942	2-1/2	4-3/8	1-3/4	30.3	3.5
68	C	HD50CTB68	2517	13.893	13.533	2-1/2	4-3/8	1-3/4	39.4	3.5
76	C	HD50CTB76	2517	15.486	15.124	2-1/2	4-3/8	1-3/4	41.2	3.5
84	C	HD50CTB84	2517	17.079	16.715	2-1/2	4-3/8	1-3/4	45.3	3.5
95	C	HD50CTB95	2517	19.267	18.903	2-1/2	4-3/8	1-3/4	58.8	3.5
102	C	HD50CTB102	2517	20.661	20.295	2-1/2	4-3/8	1-3/4	67.1	3.5

H - Denotes hardened teeth.

TAPER-BUSHED SPROCKETS

No. 60

3/4 " Pitch



Type B

Single Taper-Bushed

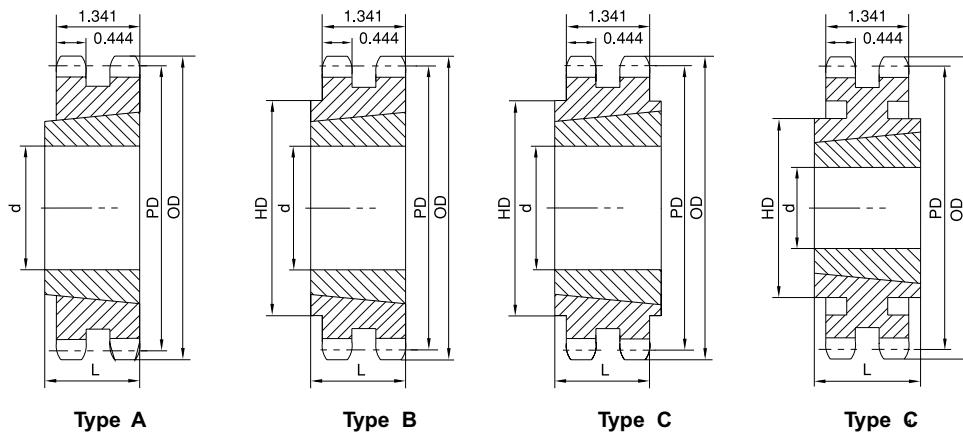
No. of Teeth	Part No.	Bushing	OD	PD	Max. Bore d	HD	L	App. Wt. (Lbs.)	
								Sprocket	Bushing
11	H60BTB11	1008	3.004	2.662	1	1-13/16*	7/8	0.6	0.3
12	H60BTB12	1008	3.249	2.898	1	1-15/16	7/8	0.8	0.3
13	H60BTB13	1210	3.493	3.134	1-1/4	2-15/32*	1	0.8	0.6
14	H60BTB14	1210	3.736	3.371	1-1/4	2-15/32	1	1.0	0.6
15	H60BTB15	1610	3.979	3.607	1-5/8	2-25/32	1	1.0	0.9
16	H60BTB16	1610	4.221	3.844	1-5/8	3	1	1.4	0.9
17	H60BTB17	1610	4.462	4.082	1-5/8	3-1/4	1	1.8	0.9
18	H60BTB18	1610	4.704	4.319	1-5/8	3-1/4	1	1.9	0.9
19	H60BTB19	1610	4.945	4.557	1-5/8	3-1/4	1	2.2	0.9
20	H60BTB20	2012	5.185	4.794	2	3-9/16	1-1/4	2.2	1.7
21	H60BTB21	2012	5.426	5.032	2	3-9/16	1-1/4	2.5	1.7
22	H60BTB22	2012	5.666	5.270	2	3-9/16	1-1/4	2.8	1.7
23	H60BTB23	2012	5.907	5.508	2	3-9/16	1-1/4	3.1	1.7
24	H60BTB24	2012	6.147	5.746	2	3-9/16	1-1/4	3.4	1.7
25	H60BTB25	2012	6.387	5.984	2	3-9/16	1-1/4	3.7	1.7
26	H60BTB26	2012	6.627	6.222	2	3-9/16	1-1/4	4.0	1.7
27	H60BTB27	2012	6.867	6.416	2	3-9/16	1-1/4	4.2	1.7
28	H60BTB28	2012	7.107	6.699	2	3-9/16	1-1/4	4.6	1.7
30	H60BTB30	2012	7.586	7.175	2	3-9/16	1-1/4	5.2	1.7
32	H60BTB32	2012	8.065	7.652	2	3-9/16	1-1/4	5.6	1.7
35	H60BTB35	2012	8.783	8.367	2	3-9/16	1-1/4	6.4	1.7
36	H60BTB36	2012	9.022	8.605	2	3-9/16	1-1/4	6.6	1.7
40	H60BTB40	2012	9.980	9.559	2	3-9/16	1-1/4	8.3	1.7
42	H60BTB42	2012	10.458	10.036	2	3-9/16	1-1/4	10.0	1.7
45	H60BTB45	2012	11.175	10.752	2	3-9/16	1-1/4	11.5	1.7
48	H60BTB48	2012	11.893	11.467	2	3-9/16	1-1/4	13.2	1.7
54	H60BTB54	2517	13.327	12.899	2-1/2	4-1/4	1-3/4	17.1	3.5
60	H60BTB60	2517	14.761	14.330	2-1/2	4-1/4	1-3/4	21.0	3.5
70	H60BTB70	2517	17.150	16.717	2-1/2	4-1/4	1-3/4	27.6	3.5
72	H60BTB72	2517	17.628	17.194	2-1/2	4-1/4	1-3/4	30.0	3.5
80	H60BTB80	2517	19.539	19.103	2-1/2	4-1/4	1-3/4	36.3	3.5
84	H60BTB84	2517	20.494	20.058	2-1/2	4-1/4	1-3/4	40.6	3.5

H - Denotes hardened teeth.

*Hub has recessed groove allowing for chain clearance.

No. 60 TAPER-BUSHED SPROCKETS

3/4 " Pitch



Double Taper-Bushed

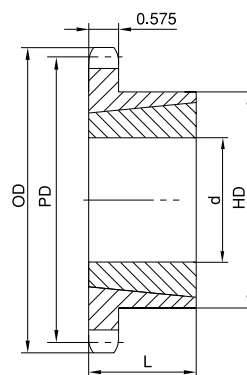
No. of Teeth	Type	Part No.	Bushing	OD	PD	Max. Bore d	HD	L	App. Wt. (Lbs.)	
									Sprocket	Bushing
13	B	HD60BTB13H	1215	3.493	3.134	1-1/4	2-1/4	1-1/2	1.2	1.6
14	B	HD60BTB14H	1215	3.736	3.371	1-1/4	2-1/2	1-1/2	1.6	1.7
15	B	HD60BTB15H	1615	3.979	3.607	1-5/8	2-13/16	1-1/2	1.8	1.8
16	B	HD60BTB16H	1615	4.221	3.844	1-5/8	3	1-1/2	2.2	2.3
17	B	HD60BTB17H	1615	4.462	4.082	1-5/8	3-1/4	1-1/2	2.5	2.8
18	A	HD60ATB18H	2012	4.704	4.319	2		1-1/4	3.0	2.4
19	A	HD60ATB19H	2012	4.945	4.557	2		1-1/4	3.5	2.9
20	B	HD60BTB20H	2517	5.185	4.794	2-1/2	3-61/64	1-3/4	4.0	2.9
21	B	HD60BTB21H	2517	5.426	5.032	2-1/2	4-3/16	1-3/4	5.0	3.8
25	B	HD60BTB25H	2517	6.387	4.984	2-1/2	5-5/32	1-3/4	7.5	7.4
30	B	HD60BTB30	2517	7.586	7.175	2-1/2	6-11/32	1-3/4	13.5	13.3
36	C	HD60CTB36	2517	9.022	8.605	2-1/2	4-1/4	1-3/4	17.5	17.4
42	C	HD60CTB42	2517	10.458	10.036	2-1/2	4-1/4	1-3/4	25.5	25.0
45	C	HD60CTB45	2517	11.176	10.752	2-1/2	4-1/4	1-3/4	29.5	29.3
52	C	HD60CTB52	2517	12.849	12.422	2-1/2	4-1/4	1-3/4	41.0	40.3
60	C ₁	HD60CTB60	2517	14.761	14.330	2-1/2	4-1/4	1-3/4	32.5	33.5
68	C ₁	HD60CTB68	2517	16.672	16.240	2-1/2	4-1/2	1-3/4	36.5	43.2
76	C ₁	HD60CTB76	3020	18.583	18.149	3	5-1/4	2	42.5	47.8
95	C ₁	HD60CTB95	3020	23.121	22.684	3	5-1/4	2	48.5	69.8

H - Denotes hardened teeth.

TAPER-BUSHED SPROCKETS

No. 80

1" Pitch



Type B

Single Taper-Bushed

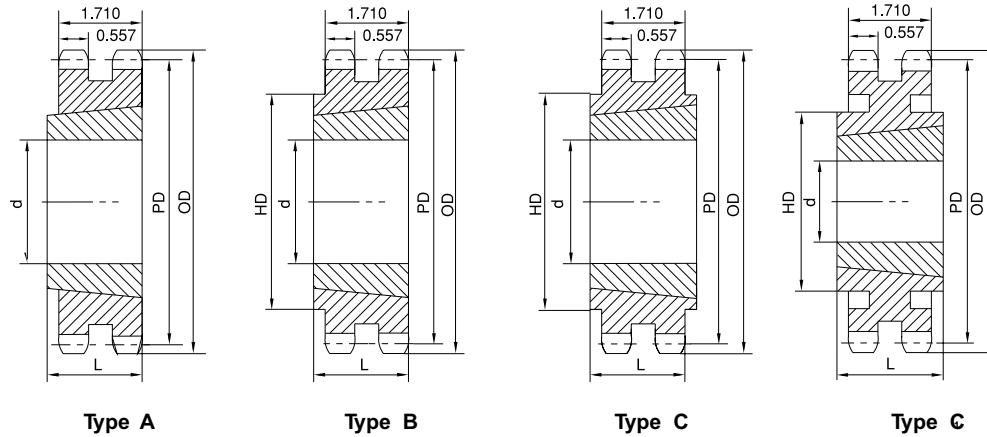
No. of Teeth	Part No.	Bushing	OD	PD	Max. Bore d	HD	L	App. Wt. (Lbs.)	
								Sprocket	Bushing
10	H80BTB10	1215	3.678	3.236	1-1/4	2-3/8*	1-1/2	1.1	0.8
11	H80BTB11	1215	4.006	3.549	1-1/4	2-15/32*	1-1/2	1.5	0.8
12	H80BTB12	1615	4.332	3.864	1-5/8	3*	1-1/2	1.8	1.2
13	H80BTB13	1615	4.657	4.179	1-5/8	3	1-1/2	2.3	1.2
14	H80BTB14	1615	4.982	4.494	1-5/8	3-1/4	1-1/2	2.5	1.2
15	H80BTB15	1615	5.305	4.810	1-5/8	3-1/4	1-1/2	2.7	1.2
16	H80BTB16	2012	5.627	5.126	2	3-9/16	1-1/4	2.8	1.7
17	H80BTB17	2012	5.950	5.442	2	3-9/16	1-1/4	3.1	1.7
18	H80BTB18	2012	6.271	5.759	2	3-9/16	1-1/4	3.6	1.7
19	H80BTB19	2012	6.593	6.076	2	3-9/16	1-1/4	4.1	1.7
20	H80BTB20	2517	6.914	6.392	2-1/2	4-1/4	1-3/4	5.5	1.7
21	H80BTB21	2517	7.235	6.710	2-1/2	4-1/4	1-3/4	6.0	3.5
22	H80BTB22	2517	7.555	7.027	2-1/2	4-1/4	1-3/4	6.5	3.5
23	H80BTB23	2517	7.875	7.344	2-1/2	4-1/4	1-3/4	7.0	3.5
24	H80BTB24	2517	8.196	7.661	2-1/2	4-1/4	1-3/4	7.5	3.5
25	H80BTB25	2517	8.516	7.979	2-1/2	4-1/4	1-3/4	8.1	3.5
26	H80BTB26	2517	8.836	8.296	2-1/2	4-1/4	1-3/4	8.8	3.5
27	H80BTB27	2517	9.156	8.614	2-1/2	4-1/4	1-3/4	9.0	3.5
28	H80BTB28	2517	9.475	8.931	2-1/2	4-1/4	1-3/4	9.5	3.5
30	H80BTB30	2517	10.114	9.567	2-1/2	4-1/4	1-3/4	11.5	3.5
32	H80BTB32	2517	10.753	10.202	2-1/2	4-1/4	1-3/4	12.0	3.5
35	H80BTB35	2517	11.711	11.156	2-1/2	4-1/4	1-3/4	15.2	3.5
36	H80BTB36	2517	12.030	11.474	2-1/2	4-1/4	1-3/4	17.0	3.5
40	H80BTB40	2517	13.306	12.746	2-1/2	4-1/4	1-3/4	21.0	3.5
45	H80BTB45	2517	14.901	14.336	2-1/2	4-1/4	1-3/4	26.5	3.5
48	H80BTB48	2517	15.857	15.290	2-1/2	4-1/4	1-3/4	29.5	3.5
54	H80BTB54	2517	17.769	17.198	2-1/2	4-1/4	1-3/4	38.5	3.5
60	H80BTB60	2517	19.681	19.107	2-1/2	4-1/4	1-3/4	45.0	3.5
70	H80BTB70	3020	22.867	22.289	3	5-1/4	2	52.3	6.5
80	H80BTB80	3020	26.052	25.471	3	5-1/4	2	69.2	6.5

H - Denotes hardened teeth.

*Hub has recessed groove allowing for chain clearance.

No. 80 TAPER-BUSHED SPROCKETS

1" Pitch



Double Taper-Bushed

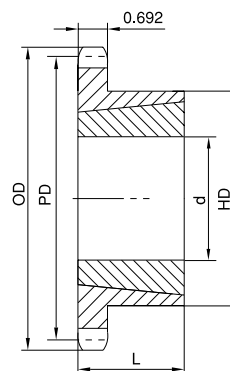
No. of Teeth	Type	Part No.	Bushing	OD	PD	Max. Bore d	HD	L	App. Wt. (Lbs.)	
									Sprocket	Bushing
13	A	HD80ATB13	1615	4.657	4.179	1-5/8		1-1/2	3.4	1.2
14	A	HD80ATB14	2012	4.982	4.494	2		1-1/4	3.5	1.7
15	A	HD80ATB15	2012	5.305	4.810	2		1-1/4	4.3	1.7
16	A	HD80ATB16	2517	5.627	5.126	2-1/2		1-3/4	3.8	3.5
17	A	HD80ATB17	2517	5.950	5.442	2-1/2		1-3/4	5.1	3.5
18	A	HD80ATB18	2517	6.271	5.759	2-1/2		1-3/4	6.4	3.5
19	B	HD80BTB19	3020	6.593	6.076	3	5	2	5.6	6.5
20	B	HD80BTB20	3020	6.914	6.392	3	5-1/4	2	7.1	6.5
21	B	HD80BTB21	3020	7.235	6.710	3	5-9/16	2	8.9	6.5
25	B	HD80BTB25	3020	8.516	7.979	3	6-7/8	2	16.5	6.5
30	C	HD80CTB30	3020	10.114	9.567	3	5-1/4	2	25.1	6.5
36	C	HD80CTB36	3020	12.030	11.474	3	5-1/4	2	39.4	6.5
42	C	HD80CTB42	3020	13.944	13.392	3	5-1/4	2	36.4	6.5
45	C ₁	HD80CTB45	3020	14.901	14.336	3	5-1/4	2	41.4	6.5
52	C ₁	HD80CTB52	3020	17.132	16.562	3	5-1/4	2	56.2	6.5
60	C ₁	HD80CTB60	3020	19.681	19.107	3	5-1/4	2	66.3	6.5
68	C ₁	HD80CTB68	3020	22.230	21.653	3	5-1/4	2	72.0	6.5
76	C ₁	HD80CTB76	3020	24.778	24.198	3	5-1/4	2	89.1	6.5
95	C ₁	HD80CTB95	3020	30.828	30.245	3	5-1/4	2	112.0	6.5

H - Denotes hardened teeth.

TAPER-BUSHED SPROCKETS

No. 100

1-1/4" Pitch



Type B

Single Taper-Bushed

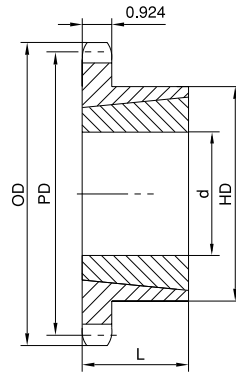
No. of Teeth	Part No.	Bushing	OD	PD	Max. Bore d	HD	L	App. Wt. (Lbs.)	
								Sprocket	Bushing
11	H100BTB11	1615	5.007	4.437	1-5/8	3	1-1/2	2.7	1.2
12	H100BTB12	1615	5.415	4.830	1-5/8	3-1/4	1-1/2	3.5	1.2
13	H100BTB13	2012	5.821	5.223	2	3-9/16	1-1/4	3.6	1.7
14	H100BTB14	2012	6.227	5.617	2	3-9/16	1-1/4	3.9	1.7
15	H100BTB15	2517	6.631	6.012	2-1/2	4-1/4	1-3/4	5.0	3.5
16	H100BTB16	2517	7.034	6.407	2-1/2	4-1/2	1-3/4	6.4	3.5
17	H100BTB17	2517	7.437	6.803	2-1/2	4-1/2	1-3/4	7.1	3.5
18	H100BTB18	2517	7.839	7.198	2-1/2	4-1/2	1-3/4	7.8	3.5
19	H100BTB19	2517	8.241	7.594	2-1/2	4-1/2	1-3/4	8.7	3.5
20	H100BTB20	2517	8.642	7.991	2-1/2	4-1/2	1-3/4	9.6	3.5
21	H100BTB21	2517	9.043	8.387	2-1/2	4-1/2	1-3/4	10.6	3.5
22	H100BTB22	2517	9.444	8.783	2-1/2	4-1/2	1-3/4	11.0	3.5
24	H100BTB24	2517	10.245	9.577	2-1/2	4-1/2	1-3/4	13.0	3.5
26	H100BTB26	2517	11.045	10.370	2-1/2	4-1/2	1-3/4	15.0	3.5
28	H100BTB28	3020	11.844	11.164	3	5-1/4	2	16.5	6.5
30	H100BTB30	3020	12.643	11.958	3	5-1/4	2	22.0	6.5
32	H100BTB32	3020	13.442	12.753	3	5-1/4	2	23.0	6.5
35	H100BTB35	3020	14.639	13.945	3	5-1/4	2	28.0	6.5
36	H100BTB36	3020	15.038	14.342	3	5-1/4	2	31.0	6.5
40	H100BTB40	3020	16.633	15.932	3	5-1/4	2	37.0	6.5
45	H100BTB45	3020	18.626	17.919	3	5-1/4	2	46.0	6.5
48	H100BTB48	3020	19.821	19.112	3	5-1/4	2	53.0	6.5
54	H100BTB54	3020	22.212	21.498	3	5-1/4	2	62.0	6.5
60	H100BTB60	3020	24.601	23.884	3	5-1/4	2	72.0	6.5

H - Denotes hardened teeth.

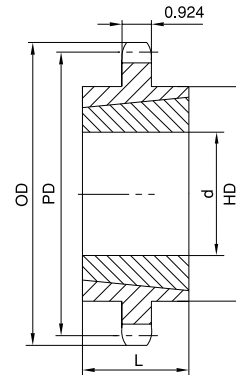
No. 120

TAPER-BUSHED SPROCKETS

1-1/2 " Pitch



Type B



Type C

Single Taper-Bushed

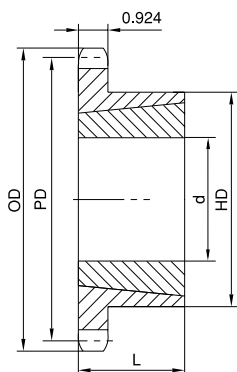
No. of Teeth	Type	Part No.	Bushing	OD	PD	Max. Bore d	HD	L	App. Wt. (Lbs.)	
									Sprocket	Bushing
12	B	H120BTB12	2012	6.498	5.796	2	3-9/16	1-1/4	5.5	1.7
13	B	H120BTB13	2517	6.896	6.268	2-1/2	4-1/4	1-3/4	6.0	3.5
14	B	H120BTB14	2517	7.472	6.741	2-1/2	4-1/4	1-3/4	7.0	3.5
15	B	H120BTB15	2517	7.957	7.215	2-1/2	4-1/4	1-3/4	8.0	3.5
16	B	H120BTB16	3020	8.441	7.689	3	5-1/4	2	10.0	6.5
17	B	H120BTB17	3020	8.924	8.163	3	5-1/4	2	11.0	6.5
18	B	H120BTB18	3020	9.407	8.638	3	5-1/4	2	12.0	6.5
19	B	H120BTB19	3020	9.889	9.113	3	5-1/4	2	14.0	6.5
20	B	H120BTB20	3020	10.371	9.588	3	5-1/4	2	15.5	6.5
21	B	H120BTB21	3020	10.851	10.064	3	5-1/4	2	17.5	6.5
24	B	H120BTB24	3020	12.294	11.492	3	5-1/4	2	23.5	6.5
26	B	H120BTB26	3020	13.254	12.444	3	5-1/4	2	28.5	6.5
30	B	H120BTB30	3020	15.171	14.351	3	5-1/4	2	33.5	6.5
35	C	H120CTB35	3020	17.566	16.734	3	5-1/4	2	52.0	6.5
45	C	H120CTB45	3030	22.351	21.503	3	5-7/8	3	82.0	9.2
60	C	H120CTB60	3535	29.522	28.661	3-1/2	6-1/2	3-1/2	140.0	14.0
70	C	H120CTB70	3535	34.301	33.434	3-1/2	6-1/2	3-1/2	175.0	14.0
80	C	H120CTB80	3535	39.078	38.207	3-1/2	6-1/2	3-1/2	220.0	14.0

H - Denotes hardened teeth.

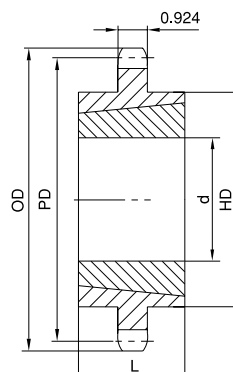
TAPER-BUSHED SPROCKETS

No. 140

1-3/4" Pitch



Type B



Type C

Single Taper-Bushed

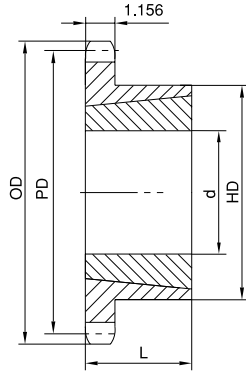
No. of Teeth	Type	Part No.	Bushing	OD	PD	Max. Bore d	HD	L	App. Wt. (Lbs.)	
									Sprocket	Bushing
12	B	H140TB12	2517	7.581	6.762	2-1/2	4-1/4	1-3/4	7.0	3.5
13	B	H140TB13	3020	8.150	7.313	3	5-1/4	2	8.0	6.5
14	B	H140TB14	3020	8.718	7.864	3	5-1/4	2	10.0	6.5
15	B	H140TB15	3020	9.283	8.417	3	5-1/4	2	12.0	6.5
16	B	H140TB16	3020	9.848	8.970	3	5-1/4	2	14.0	6.5
17	B	H140TB17	3020	10.411	9.524	3	5-1/4	2	16.0	6.5
18	B	H140TB18	3020	10.975	10.078	3	5-1/4	2	18.0	6.5
19	B	H140TB19	3020	11.537	10.632	3	5-1/4	2	20.0	6.5
21	B	H140TB21	3020	12.660	11.742	3	5-1/4	2	24.0	6.5
26	B	H140TB26	3020	15.463	14.518	3	5-1/4	2	40.0	6.5
35	C	H140CTB35	3535	20.494	19.523	3-1/2	6-1/2	3-1/2	78.0	14.0
45	C	H140CTB45	4040	26.076	25.087	4	7-3/4	4	118.0	22.0
60	C	H140CTB60	4040	34.442	33.438	4	7-3/4	4	188.0	22.0
70	C	H140CTB70	4040	40.017	39.006	4	7-3/4	4	241.0	22.0

H - Denotes hardened teeth.

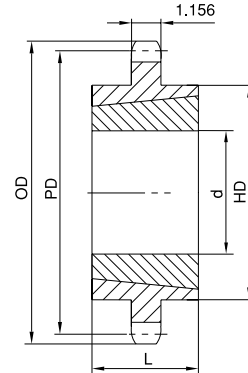
No. 160

TAPER-BUSHED SPROCKETS

2" Pitch



Type B



Type C

Single Taper-Bushed

No. of Teeth	Type	Part No.	Bushing	OD	PD	Max. Bore d	HD	L	App. Wt. (Lbs.)	
									Sprocket	Bushing
11	B	H160BTB11	2517	8.011	7.099	2-1/2	4-1/4	1-3/4	9.0	3.5
12	B	H160BTB12	3020	8.664	7.727	3	5-1/4	2	11.0	6.5
13	B	H160BTB13	3020	9.314	8.357	3	5-1/4	2	13.0	6.5
14	B	H160BTB14	3020	9.963	8.988	3	5-1/4	2	16.0	6.5
15	B	H160BTB15	3535	10.609	9.620	3-1/2	6-1/2	3-1/2	25.0	14.0
16	B	H160BTB16	3535	11.255	10.252	3-1/2	6-1/2	3-1/2	28.0	14.0
17	B	H160BTB17	3535	11.899	10.885	3-1/2	6-1/2	3-1/2	32.0	14.0
18	B	H160BTB18	3535	12.543	11.518	3-1/2	6-1/2	3-1/2	35.0	14.0
19	B	H160BTB19	3535	13.185	12.151	3-1/2	6-1/2	3-1/2	39.0	14.0
21	B	H160BTB21	3535	14.470	13.419	3-1/2	6-1/2	3-1/2	48.0	14.0
26	B	H160BTB26	3535	17.671	16.593	3-1/2	6-1/2	3-1/2	68.0	14.0
35	C	H160CTB35	4040	23.422	22.312	4	7-3/4	4	118.0	22.0
45	C	H160CTB45	4040	29.802	28.671	4	7-3/4	4	186.0	22.0
60	C	H160CTB60	4545	39.362	38.215	4-1/2	8-3/4	4-1/2	292.0	30.0

H - Denotes hardened teeth.